



**DHALLA CAMP**  
TROPHY TIGERFISH SAFARI  
TANZANIA

**TANZANIA  
BROCHURE**

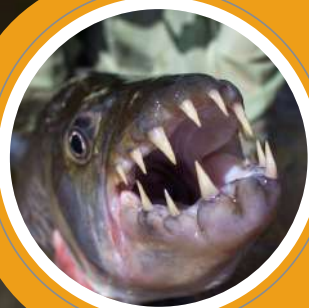


**TOURETTE FISHING**  
TRY FIGHT IT IN AFRICA

SEASON: AUG - NOV

DURATION: 7 NIGHTS - 6 DAYS FISHING

GUESTS: 2-8



## Tiger Fish

Tigerfish (*H.tanzaniae*) ranging in size from 1 to 28lbs are the main quarry. The Tourette Fishing Guides team are pioneers in targeting tigerfish on fly, and are widely regarded as industry leaders. Over the past 6 years guiding and managing this fishery they have developed an in depth understanding of the fishery, the tigerfish, their habits, as well as tackle and tactics to successfully target these amazing fish.



## Yellowfish

Over the course of the 2010 season Leonard Flemming, Guide and Fishery research expert, found and deciphered the feeding habits of 3 species of yellow fish – the largest weighing in at 8lbs. Targeting yellowfish feeding on sand banks and in the rapids offers some truly unique fly fishing. Up stream nymphing is the preferred method, with short and delicate casts needed. All guides are experts in the field, and will put you onto the fish when conditions dictate.



## Vundu

With the intense anti poaching and fishery managements practices implemented by the TF and KNS teams, the vundu population on the Mnyera and Ruhudji rivers have thrived over the last 6 years. Vundu can be targeted in specific lies on the Mnyera and Ruhudji river, however most are hooked when fishing for tigerfish. Not many are landed due to the size and power of these river monsters.



## INTRODUCTION

Over the past 8 years the fisheries of the Mnyera and Ruhudji River in South Western Tanzania have fast built a reputation as one of the finest fresh water fisheries available to the discerning travelling angler. The trophy tiger fish that call these rivers home provide unparalleled tiger fishing opportunities. The Mnyera and Ruhudji Rivers are widely regarded as THE destination to target tiger fish in the 10 – 25lb range.

# COMPANY PROFILES

## Kilombero North Safaris

Kilombero North Safaris are leading players in the Tanzania Safari industry. Owning, managing and operating successful safari operations in 13 of the finest concessions in Tanzania, they pride themselves in offering all guests who visit their concessions an authentic Tanzania safari experience, be it in the photographic, fishing or hunting fields. Their commitment to the environment and protecting Tanzania's natural resources for generations to come is their priority.

Kilombero North Safaris own, run, and manage the fishing camps on the Mnyera and Ruhudji Rivers and take care of all catering, ground transfers, charter flights, camp vehicles, boats and camp accommodation. They employ a full time team of camp staff who service the fishing camp, in conjunction with their hunting camp in the same concession.



**KILOMBERO NORTH SAFARIS**



## Tourette Fishing

The Tourette Fishing team of international guides makes sure all guests fishing at Kilombero North Safari's Dhalla Camp experience world class guiding, by true international experts. Their commitment to sustainable and responsible fishery management is respected worldwide, and ensures all fishing guests experience the best that the fisheries of the Mnyera and Ruhudji Rivers have to offer.



# FISHING METHODS

The majority of the fishing is done off the drift. Here our attentions are focused on the river structure which comprises fallen timber, long sand banks, steep drop-off's and rocky outcrops. When conditions dictate we also make use of sand anchors and tying up to structure mid stream to focus our attention on a specific stretch of water. All fishing is done off 18ft aluminium boats. These boats have been chosen for their application and are ideal for fishing the Mnyera and Ruhudji Rivers. All boats are fitted with 15- 25 hp motors. Each boat caters for two anglers and their professional guide, as well as a coxswain. Boats have ample storage areas and seating for three people. All boats are equipped with first aid equipment.

This river has received very little fishing pressure over the centuries, and with the controlled fly fishing venture will continue to do so. The system is also extremely rich in bait fish (predominantly red finned barb). The combination of these factors has resulted in this population of tiger fish obtaining otherwise unheard of sizes. Trophy fish in this system are measured above 15lbs. Be prepared to have you tiger fishing paradigms shifted!



## SAFARI EXPERIENCE

DHALLA Camp (on the Mnyera River) and Samaki Camp (on the Ruhudji River) offer the adventurous fly fisherman a unique African fly fishing safari. Tented bush camps and wooden cabins erected each season, ensure that the African safari experience is as much a part of this trip as the trophy tigers you can expect to encounter. Camps are not luxury, and due to the seasonal floods are built from scratch each season, they are practical and comfortable and allow guests and guides access to these amazing rivers.

## Note On Fishing Rules

All catching is strictly "catch and release" with single debarbed hooks. No beat is fished twice in a week; areas where fish are spawning are strictly no go areas, and there is no re-drifting of beats allowed. This ensures you arrive at a fishery that is well rested and productive. Your understanding of these rules is appreciated, as we are sure you will appreciate this from the groups that have fished before you.



# CAMP LIFE

## DHALLA CAMP(Mnyera River)

Dhalla Camp, comprising 4 wooden fishing cabins and a central thatched mess and lounge area, is the base for your stay on the Mnyera River. The camp consists of 4 cabins with twin or double configurations. All cabins have a view overlooking the river. All cabins are en suite, offering a shower and toilet. Fall asleep to the sound of a rasping leopard, and wake up with the rising sun and splashes of feeding tiger fish, all in the privacy of your cabin.

Meals are enjoyed in the main central camp area under thatched roof over looking the river. This area contains a small library, lounges, and electric points for charging cameras and laptops, and a comprehensive fly tying station.

## SAMAKI CAMP(Ruhudji River)

This rustic bush camp is your base on the Ruhudji River. It too is erected each season and is the smaller sister of Dhalla Camp. Its location on the banks of the Ruhudji River allows access to these productive waters. Samaki camp comprises of traditional Safari tents, all en suite, with twin or double configurations. The mess area is situated in the shade of the river side forest, although most meals are enjoyed alfresco, under the stars on a beautiful sandbank in front of the camp. Samaki camp has no electricity.



## IMPORTANT TRIP INFO



**INOCULATIONS & DOCUMENTS REQUIERD** : Valid yellow fever inoculations are required please enquires with your local travel clinic. Tanzania is a malaria area, please make sure you consult your doctor for suitable prophylactics.

Valid passport and visa (obtainable on arrival)



**COMMUNICATION** – There is limited cell reception at the main camp. Guests will require international roaming to be activated. There is no internet available in camp. There is a camp sat phone for emergencies



**CURRENCY** - Tanania Shillings are the official currency. US dollars are accpeted for most transactions. These foreign exchange departments at the Airport and your hotel. **ONLY CASH ACCPETED IN CAMP. PLEASE ENSURE YOU BRING ENOUGH TO SETTLE TACKLE, DRINKS BILLS AND GRATUITIES.**



**MEALS** - All meals are prepared by the camp chef. Fresh produce is flown into camp each week with the group. Due to the close relationship with the nearby hunting camp, guests can enjoy fresh venison during their stay. Breakfast is normally an early affair with tea, coffee, toast, cereal and fruit taken before getting onto the boat. We break for a mid morning snack on the river banks at around 10am. Lunch is taken on the river banks in a shaded spot selected by your guides. Dinners are served in the mess area, or alfresco under the African night sky. Food is wholesome camp cuisine, all prepared in a bush kitchen.



**WILDLIFE** - Buffalo, lion, leopard and elephant are common in the area, as well as a host of plains game species including puku, warthog, hartebeest, zebra, eland and bushbuck amongst many. The bird life is exceptional with many rare and endemic species found in the area. Pels Fishing Owl, along with Palmnut Vultures, Narina Trogans, Broad Billed Roller, African Fin Foot and white backed night heron all make this riverine environment their home. Twitches bring your binoculars and guide books.

# WHAT OUR CLIENTS HAVE TO SAY:

"Dear Harry and Keith,

Have just returned from the trip in Tanzania. It was a wonderful experience, the fishing was spectacular, the country marvellous, the food awesome (Eland, Sable, Buffalo...) and the guiding (as ever) immaculate. You can be immensely proud of what you guys have achieved here. Thank you." - Hillary and Steve, UK

"Rudy and I had a great time fishing with your guides on the Mnyera and Ruhudji Rivers, everything we had hoped and more. It was a real privilege to experience this fishery and the surrounding area. We had plenty of good fishing, comfortable living, and great fun talking/living with the guides and staff. I wrote in my feedback form that I only cared to fish, but on reflection realize that time spent walking with Andy along the banks above the rapids was very memorable, and would, if offered, take away some fishing time to do a limited walking tour with your very knowledgeable guides." - George Babikian, USA







# RIVERS

## MNYERA RIVER

Guests have access to 40km of fishable waters on the Mnyera River. The Mnyera River changes character quickly over its fishable length. From rapids and pools in heavily wooded riverine forests on the upper reaches, the structure-rich mid sections courtesy of centuries of erosion and fallen trees, to the deep "outside bends" and clay banks of the lower reaches. The Mnyera, with its incredibly diverse river structure, is a veritable tigerfish haven and one that all guests visiting this amazing river will appreciate. Kilombero North Safari's Dhalla Camp is your base when fishing the Mnyera River.



## RUHUDJI RIVER

Situated in the neighbouring catchment (one valley south of the Mnyera) is this remote river with a charm and attraction that is hard to explain. Guests fishing the Ruhudji River have access to 80km of fishable water. The river is quite different from the Mnyera. It is a shallower river, with long sections of sand banks followed by deep outside bends and pools in the lower reaches. The river changes in its upper reaches to a narrow deep river, bordered by steep banks and heavily wooded forests as it enters the "gorge area". Kilombero North Safari's Samaki Camp is your base when fishing the Ruhudji River.

# COSTS

Fishing Rates/person sharing  
- USD 8960.00

Observer Rates/person sharing  
- USD 5000.00

Observer Day Activities/person sharing\*  
- USD 200.00

Observer Day Activities/person single\*  
-USD 400.00

\*\*Activities include game drives and river  
trips arranged prior to safari

A 50% DEPOSIT IS REQUIRED TO SECURE YOUR PLACE WITH THE BALANCE TO BE PAID 12  
WEEKS PRIOR TO DEPARTURE

# TRIP ITENENARY

DAY 1: Morning Charter from Dar es Salaam  
to Camp. Welcome & briefing by head guide. 4  
anglers stay at Dhalla Camp, 4 Angler move to  
Samaki Camp. NO fishing on day of arrival as  
guides/staff need this time for weekly admin.  
Tackle setup and camp orientation.

DAY 2: Fish Mnyera/Ruhudji

DAY 3: Fish Mnyera/Ruhudji

DAY 4: Fish Mnyera/Ruhudji - Samaki Guests  
return the Dhalla Camp this afternoon

DAY 5: Fish Mnyera/Ruhudji - Dhalla Guests  
move to Samaki Camp this morning

DAY 6: Fish Mnyera/Ruhudji

DAY 7: Fish Mnyera/Ruhudji - Samaki Guests  
return to Dhalla Camp this evening.

DAY 8: Morning admin and charter to Dar es  
Salalaam

## PLEASE NOTE:

Travel time between camps is roughly 2 hours  
depending on road conditions. Rather than fo-  
cus on the missed fishing time, we urge guests  
to enjoy this journey through the African bush  
and take the time to view game and landscapes  
that are as wild as they were thousands of years  
ago

## PRICE INCLUDES

- ✓ Transfer from airport to from Seacliff on arrival.
- ✓ Transfer from Seacliff to charter flight on morning of departure. Transfer charter terminal to airport or Seacliff on arrival back in Dar
- ✓ Return charter flights from Dar es Salaam
- ✓ 7 nights in camp – 6 days fishing on the Mnyera and Ruhudji rivers. Fishing times sunrise to sunset.
- ✓ Access to 120km of waters
- ✓ Professional guiding
- ✓ All meals, accommodation, water, soft drinks and limited beer. Boats and fuel
- ✓ Fishing licences and concession fees
- ✓ Tanzania Government Conservation Levy

## PRICE EXCLUDES

- ✓ Flights to Dar es Salaam – please request details on international flight schedules to Dares Salaam
- ✓ Visas USD 50-100 depending on passport (at time of publishing)
- ✓ Any hotel accommodation and meals in Dar es Salaam before or after tour
- ✓ Wine, spirits – guests advised to bring their own wine and spirits from duty free.
- ✓ Beers over allocated amount in camp
- ✓ Guide and Staff Gratuities

# TERMS & CONDITIONS

## INSURANCE

Comprehensive travel, medical, baggage, money and cancellation insurance are compulsory on all Tourette Fishing tours. This is the clients' own responsibility and should be arranged in your country of origin.

**MEDICAL EVACUTATION** it is imperative that all clients have adequate travel and medical insurance that includes medical evacuation from point of injury. We strongly recommend you obtain this through Global Rescue - <http://www.globalrescue.com/tourette/> who are world leaders and are strongly linked with the fishing travel industry. You can sign up using the link provided or request the sign up form in PDF format from Tourette Fishing.

## CANCELLATION PROCEDURE

**Cancellation by Tourette Fishing:** In the event of tour being cancelled, the client may choose a full refund or alternatively any other tour that Tourette Fishing is in the position to offer. If the price of the alternative tour is less than the original tour booked. The difference will be refunded to the client. If the alternative tour is more expensive, then the client will be liable for the additional cost.

**Cancellation by Client:** Notification of cancellation must be in writing and is effective as of the date it is received by Tourette Fishing. Should a person cancel a tour and cannot find a immediate replacement: If Tourette Fishing has more than 180 days notice, deposit is forfeited unless dates can be resold, in which case a 10% admin fee will apply.

If Tourette Fishing has between 179 and 91 days notice, 70% of tour costs are forfeited, unless dates can be resold, in which case a 10% admin fee will apply.

If Tourette Fishing has less than 90days notice 100% of total fare is forfeited unless dates can be resold, in which case 15% admin fee will apply.

Once deposit is received, all revisions are subject to a USD\$100 handling fee.

If you fail to join a tour, or join after departure, or leave prior to its completion, no reimbursement whatsoever will be made.

**IT IS HIGHLY RECOMMENDED THAT TRIP CANCELLATION INSURANCE IS OBTAINED WITH YOUR TRAVEL INSURANCE POLICY AT TIME OF BOOKING**

Tourette Fishing terms and conditions apply, please request a copy if you did not receive them. It is compulsory for clients to have comprehensive travel/medical insurance prior to departure from South Africa.



# TOURETTE FISHING

If you take any activity and push it to the wildest edge, you create magic. Fly fishing for tigerfish in these two rivers is definitely one such activity. Your need to fish wild and remote waters, to create your own magic, may well be what drives you.

At Tourette Fishing we understand this urge is far more than fleeting. It is an intrinsic need that motivates all you do. You don't just want to fish, you NEED to fish.

With your limited time, we understand you want to fish the best waters at the optimum time of year with the best guides in the industry. Rest assured, for your enjoyment we have scouted what we believe are some of the finest tigerfish rivers in Southern Africa.

So, when next you get the urge to fish seriously, let us help. We'll put you on wildest edge of African fly fishing, where you can create your own magic.



**TOURETTE FISHING**  
TRY FIGHT IT IN AFRICA

**CALL US NOW**

**+(27) 33 342 2793**

25 MONTGOMERY DRIVE, PIETERMARITZBURG,  
3201

[enquiries@tourettefishing.com](mailto:enquiries@tourettefishing.com)

[www.tourettefishing.com](http://www.tourettefishing.com)

**CONNECT US**

[facebook.com/pages/Tourette-Fishing-try.../90837823797](https://facebook.com/pages/Tourette-Fishing-try.../90837823797)

[twitter.com/tourettefishing](https://twitter.com/tourettefishing)

[youtube.com/user/Tfish001](https://youtube.com/user/Tfish001)

[blog.tourettefishing.com](http://blog.tourettefishing.com)